

## PASTRY BAGS



### *Reinforced Tip*

The reinforced tip reduces the material wear produced by the use of decorating tubes, making the pastry bag last longer.

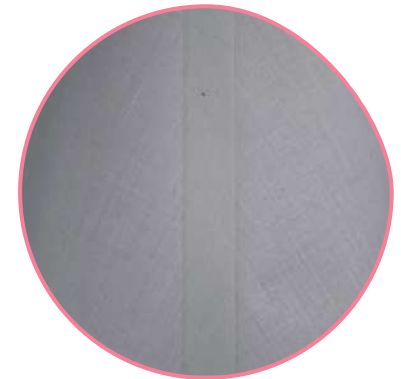


### *Hem*

Well-finished product sewed with high quality cotton yarn producing a strong and long lasting pastry bags.

### *Welding Seam*

The welding seam fulfilled at high presion and temperature guarantee a strong and soft union being as easy to use as the rest of the bag.



### *Hook*

The perfect accessory to stock or dry the pastry bag after been washed.