

PASTRY BAGS

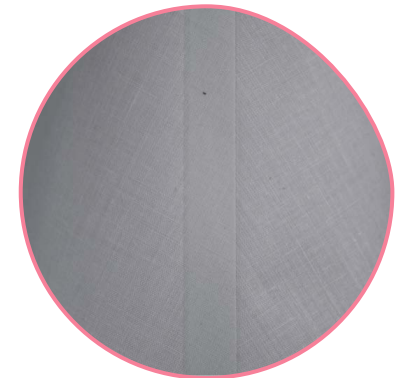


Hem

Well-finished product sewed with high quality cotton yarn producing a strong and long lasting pastry bags.

Welding Seam

The welding seam fulfilled at high presion and temperature guarantee a strong and soft union being as easy to use as the rest of the bag.



Hook

The perfect accessory to stock or dry the pastry bag after been washed.